



# Verandas

A totally adaptable modular meeting room system; highly customizable and inherently sustainable



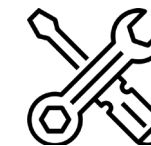


# Verandas

Meet Verandas. An engineered architectural room system that is inherently sustainable, incorporates massive design choice and is curated for the future. Materials have been sourced carefully and innovation has been applied to create unique and patented sustainable solutions.



An inherently sustainable product, with reuse and healthy materials at its core



Built-in flexibility allows for engineered room and space creation with endless options



Huge design choice with a plethora of finish options, accessories and add-on spaces



# Verandas

To cater for the meeting room problem of today, Verandas has been born, to provide a highly flexible, sustainable and design-focussed solution.

The construction is a highly adaptable and modular way of creating space division, collaborative and social settings, as well as incorporating accessories and customization.

High levels of modularity are integrated into the construction of the product, meaning each room variant can be dismantled and rebuilt with ease and at high speed by the in-house facilities team. The entire assembly process can be completed using only hand tools.

The room design is based around a 600mm/ 24" modular frame, which forms the foundation of the build. At each joint, intermediate vertical structural posts allow cross-walls to be built off at any point.

Traditional meeting rooms not only use materials that are impossible or difficult to recycle, but are totally single-use and when dismantled, the meeting room is simply thrown away. With Verandas, every single element apart from the acoustic seals can be reused again, not only reducing wastage and therefore money, but saving anything from going to landfill.

## Key Benefits of the Verandas Modular Plug-and-Play Construction

- Clean and sustainable
- Modular 'kit-of-parts'
- Flexibility to alter room style and use
- Enables lower skilled operatives to be able to install and reconfigure - no need for multiple trades like partition fixers, tape jointers, decorators, carpenters, electricians, plumbers etc.
- Makes MEP simple, especially for reconfiguration
- No mess when dismantling, unlike traditional partitioning



# Product Sustainability Story

It's a primary concern of ours that we preserve and nurture the environment and our planet. We constantly strive to minimise our environmental impact and keep this front of mind in every project. So, Verandas has been designed with a materials palette that is compliant with stringent global standards, ensuring the health, safety and comfort of users, as well as the last possible environmental impact.

- Spacestor provides full product transparency declarations and certifications.
- This includes emissions certificates for any composite wood, VOC declarations for interior paints, adhesives, sealants, finishes and insulation contributing to LEED points and other similar international certifications.
- The majority of our board components meet the emissions limit values of the European formaldehyde class E1 under ECHA (European Chemicals Agency), which means board materials contain a maximum of 0.007% formaldehyde. All products in the USA are compliant with the requirements of TSCA Title VI (Toxic Substance Control Act).
- As part of this programme, we're very pleased to announce that we have acquired the International Living Future institute Declare Label for our Verandas product, as well as for five other key products.
- Our environmental product summary gives the life cycle sustainability information of this product, which is virtually 100% recyclable.
- All timber used can be FSC certified.
- The majority of upholstery fabrics are EU Ecolabel certified, which is a third party certified Type I ISO 14024 certification, which identifies products with reduced environmental impact. A large number of textiles can also contribute to LEED credits, having the GREENGUARD(R) certification which follows the standard: California Department of Public Health (CDPH) Standard Method V1.2-2017, and is accepted by LEED and the majority of other green building standards.

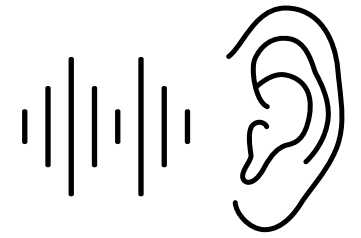


100% reusable

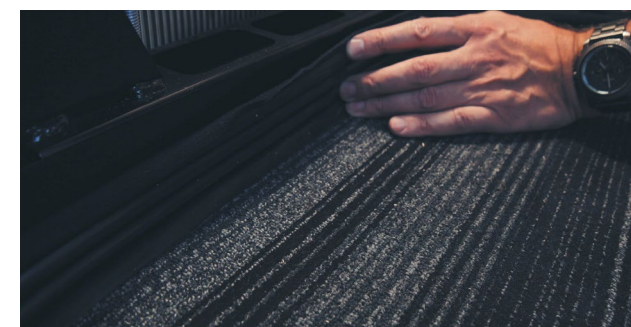


Virtually 100% recyclable

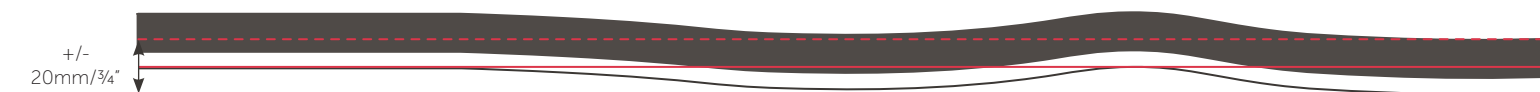
## Acoustics



From an acoustic perspective, a patented flexible acoustic seal technique, unique to Spacestor, allows for installation on uneven floor surfaces without losing the acoustic integrity of the room. Avoiding the need to level out the subfloor means Verandas can be deployed in all existing buildings without disruption and construction work.



Acoustic seal



The acoustic seal follows the contour of the floor and can cope with a  $\frac{3}{4}$ "/20mm difference in surface level, avoiding the need for floors to be levelled prior to installation.





MEP



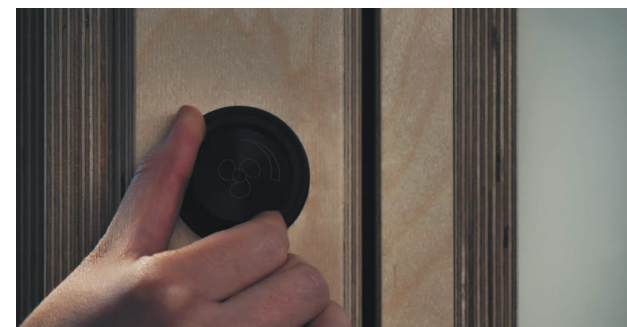
*Airflow system*

We have designed our electrical solution to be as flexible and future-proof as possible, and the unique frame and cable route design allows for power and data points, or third party devices such as smoke detectors (wired or wireless) to be accommodated in almost any area of the pod, inside or out.

All cable routes can be accessed with easily removable acoustic decor panels to allow for installation, reconfiguration and servicing, without the need for specialist trades.

One of the most innovative features of the Verandas system is the unique room cooling and temperature control system. Again, this has been developed as a modular plug-and-play solution that can be deployed and reconfigured without the need for specialist MEP trades, and is intended to ensure the modular spaces can be installed and used completely independently of the building services provision. On our single-person rooms, this ventilation is user-adjustable and fixed ventilation is provided on all other room types.

The modular rooms have been developed with a ventilation technique unique to Spacestor: a patent pending 'airflow through the walls' system. As air enters the top of the room, the fans pull ambient air into the room from the exterior of the pod. Once inside, the air then moves up behind the upholstery panels and exits at the top. Additional optional features for improved air quality include UV cleaning incoming air and CO2 detection linked to fan speed control.



*Fan control*



*Cable-management within ceiling*



# Enabling Your Corporate Social Responsibility

## Get a Room, Give a Room

Verandas influence reaches far beyond the workplace. It's not just a meeting space solution, it's a way of adding value to the world as well as your workspace.

This is because at the heart of everything we do, is our love for people. Not just for those at work but for all human kind.

We understand that responsible companies are considering how their actions are impacting the future. Many companies are becoming more aware of their potential to become a force for positive change. This is why through the Spacestor Havens foundation we have established a partnership with DePaul International to help you to help the less fortunate. With every Verandas room you purchase, 1 homeless person is given support and shelter to set them back up in society again.

When you chose Verandas, you are choosing to care.

In Partnership with DePaul

# HAVENS

By Spacestor





# Modular Flexibility



Upholstered Wall

Cork Wall



Pinboard panel



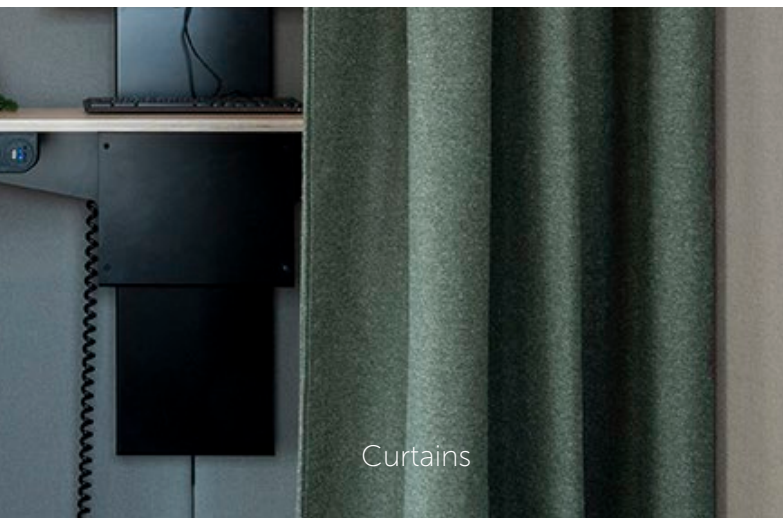
## WALL MODULES

Moss Wall

Slat Wall

Chalkboard Wall

Bark Wall



Curtains



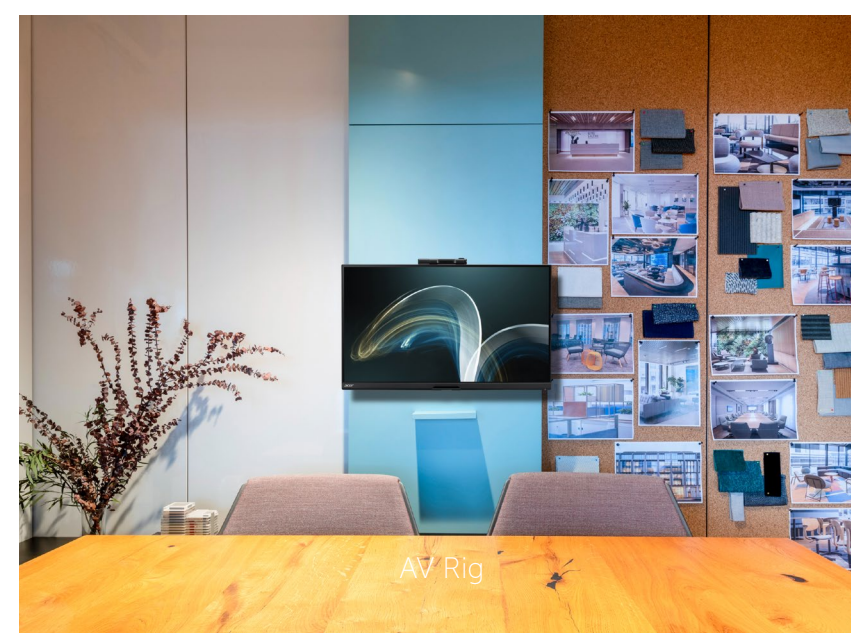
Glass Wall

Writable Glass



Whiteboard Wall

Door module



AV Rig



# Verandas

A totally adaptable modular meeting room system; highly flexible and inherently sustainable with huge design choice

## Variations



Configuration I  
TSS-CO1



Configuration I Reconfigured  
TSS-CO1



Configuration II  
TSS-CO2



Configuration II Reconfigured  
TSS-CO2



Configuration III  
TSS-CO3



Configuration III Reconfigured  
TSS-CO3



Configuration IV  
TSS-CO4



Configuration IV Reconfigured  
TSS-CO4



Configuration V  
TSS-CO5



Configuration V Reconfigured  
TSS-CO5



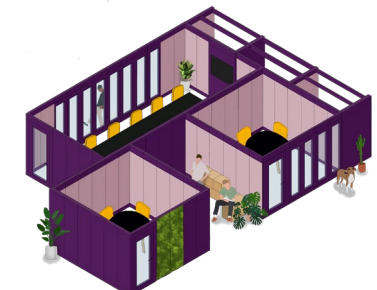
Configuration VI  
TSS-CO6



Configuration VI Reconfigured  
TSS-CO6



Configuration VII  
TSS-CO7



Configuration VII Reconfigured  
TSS-CO7



Configuration VIII  
TSS-CO8



Configuration VIII Reconfigured  
TSS-CO8



## Walls Styles

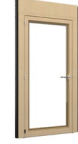
### Double sided



Glass  
GLS



Fixed Slatwall  
FSL



Door Module  
DOR



Writeable Glass  
GLS

### External



Panel Wall  
PWP



Upholstered Wall  
UUP



Pegboard Wall  
PBW



Moss Wall  
MOS



Chalkboard Wall  
CLK



Whiteboard Wall  
WHT



Pinboard Wall  
PIN



Bark Feature Wall  
BKW

### Internal



Upholstered Wall  
UUP



Pinboard Wall  
PIN

## Add-On Spaces



Collaborate  
COL



Breakout  
TDN



Touch & Go  
TGO



Retreat  
RTR



Nook & Bay  
NBY



Enclave  
ENC



Arch Infill  
ARH

## Audio Visual



AV Rig 600w  
(Screen-ready)  
AVW



AV Rig 600w with  
Table (Screen-ready)  
AVW



AV Rig 1200w  
(Screen-ready)  
AVW



AV Rig 1200w with  
Table (Screen-ready)  
AVW

## Desks & Benches



Fixed Desk  
DSK



Touchdown  
Workbench  
TDW



Shelf  
SHL



Scalloped Desk  
SCD

## Accessories



Sofa  
SOF



Cubby 5-High Stack  
FHC



Locker 5-High Stack  
LCK



Low Credenza Unit  
LCU



Hook-On Whiteboard  
HOW



Freestanding Table  
FST



Pouffe  
POF



Bench Seat  
BNC



## Other details

### Finishes

#### Clad finishes

Lacquered Plywood

Paint - RAL Classic

LPL 1: White

LPL 4: Black, Fog Grey, Hardrock Maple

Wood Stains also available

#### Upholstery finishes

**Group 3:** Camira Main Line Flax, Camira Synergy

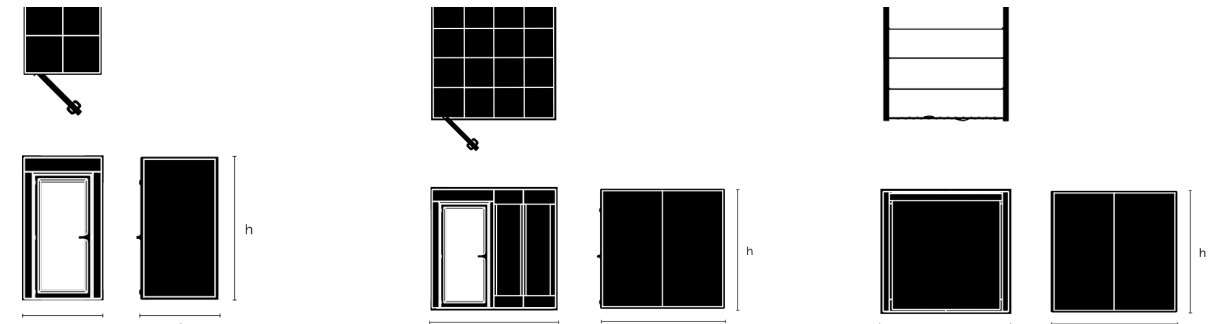
**Group 4:** Camira Blazer, Kvadrat Remix 3, Kvadrat Melange Nap, Kvadrat Clara 2, Kvadrat Hero

**Group 5:** Kvadrat Steelcut Trio 3, Kvadrat Canvas 2, Kvadrat Hallingdall 65

#### Technical Specification

- Plug and play modular system
- Level threshold for easy access
- 2 year warranty on electrical parts
- 5 year warranty on all structural elements (subject to normal conditions of use and care)
- Furniture grade (A) birch plywood
- Soft-seal door close
- Decibel reduction rating in excess of 35dB achieved through high performance acoustic materials and acoustic seal technique
- User-adjustable air flow through the walls ventilation system
- User-controllable, dimmable lighting

## External Dimensions



#### Single Person Pod

51½" x 51½"  
51½" x 75"  
75" x 75"

#### Meeting Room

99" x 99", 99" x 122½"  
99" x 146", 122½" x 122½"  
122½" x 146", 122½" x 170"  
146" x 146", 146" x 170"  
146" x 193"

#### Meeting Cove

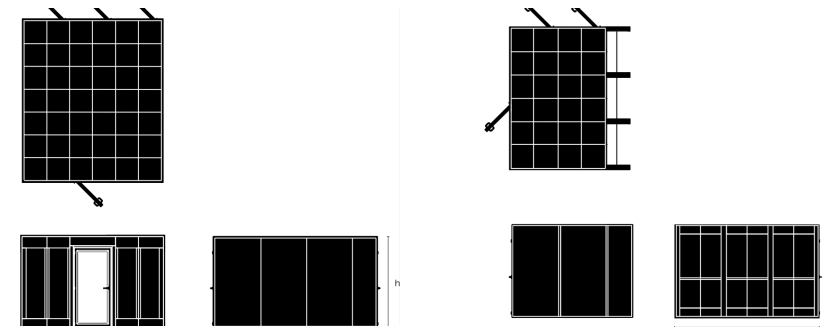
99" x 99", 99" x 122½"  
122½" x 122½", 122½" x 170"

Height

94½"

94½"

94½"



#### Meeting Cluster

170" x 146", 193" x 193"  
193" x 287½"

#### Meeting Cluster Plus

122½" x 146", 146" x 170"  
193" x 170"

Height

94½"

94½"



# Inspiration

Verandas is so much more than a meeting room. By activating the external walls using additional architecture and add-on accessories, we can really maximise the possibilities it brings to your work-space, providing a great mix of different settings, catering to multiple working styles and needs.



*Informal meeting*



*Scrum working*



*Chill-out*

*Brainstorming Space*



*Private Meeting*



*Catch up*



*Hybrid Team Meeting*

*Video conferencing*

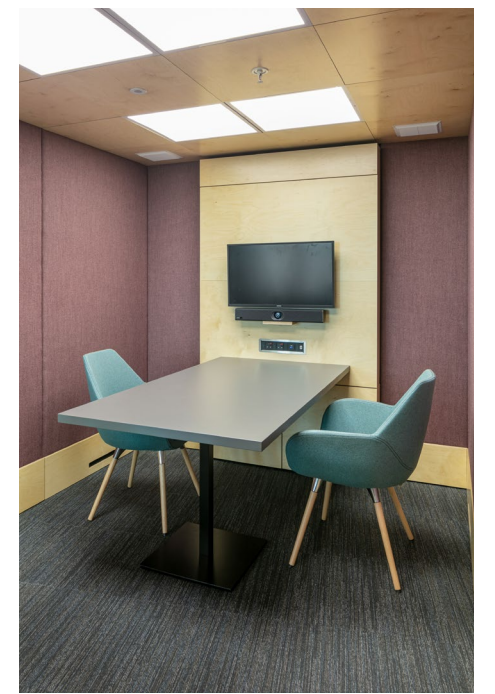
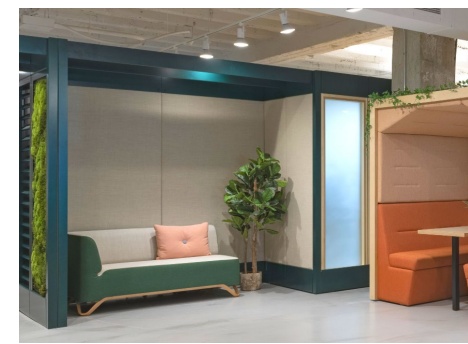
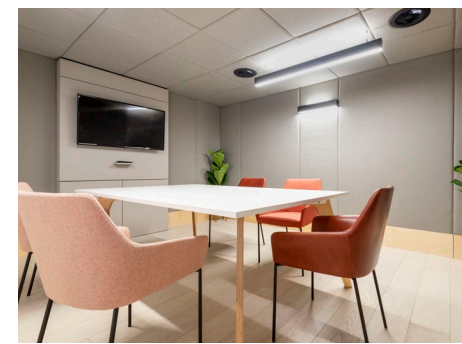
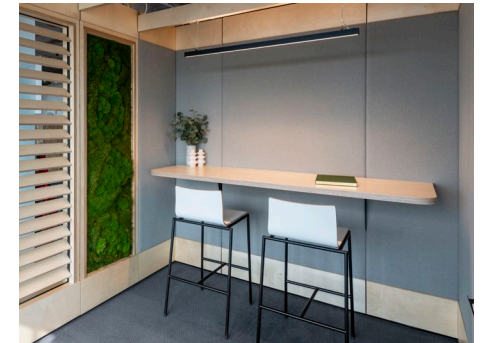


*Breakout*



*Focus-working*







# CALIFORNIA COOL



## LONDON DESIGN

LA: (310) 410-0220  
PA: (484) 572-3955  
NY: (212) 457-1664  
[us.sales@spacestor.com](mailto:us.sales@spacestor.com)  
[www.spacestor.com](http://www.spacestor.com)