



Bleachers

Spacestor®

Bleachers

A modular bleacher system, instantly reconfigurable for every collaboration, with flexibility from storage to tiered seating.

Base Components



Single Base
BLU-SGB



Double Base
BLU-DBB

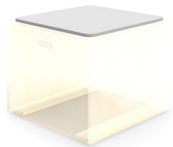


Double-height double base
BLU-DHB

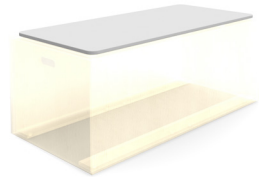


Double cubby
BLU-DCS

Top Components



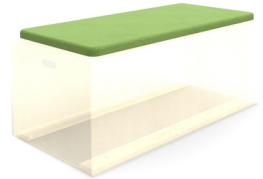
Single footplate
BLU-SGF



Double footplate
BLU-DBF



Single seatpad
BLU-SGS



Double seatpad
BLU-DBP

Alternative Options



Single Top
BLU-SGT



Double Top
BLU-DBT



Double Cubby Top
BLU-DCT



Double-height Top
BLU-DHT

- For safety reasons it is recommended single Bleachers are not stacked more than four high individually, but interlocked with double Bleachers for increased stability
- 110kg/242lb weight loading
- 5 year warranty

Example configurations



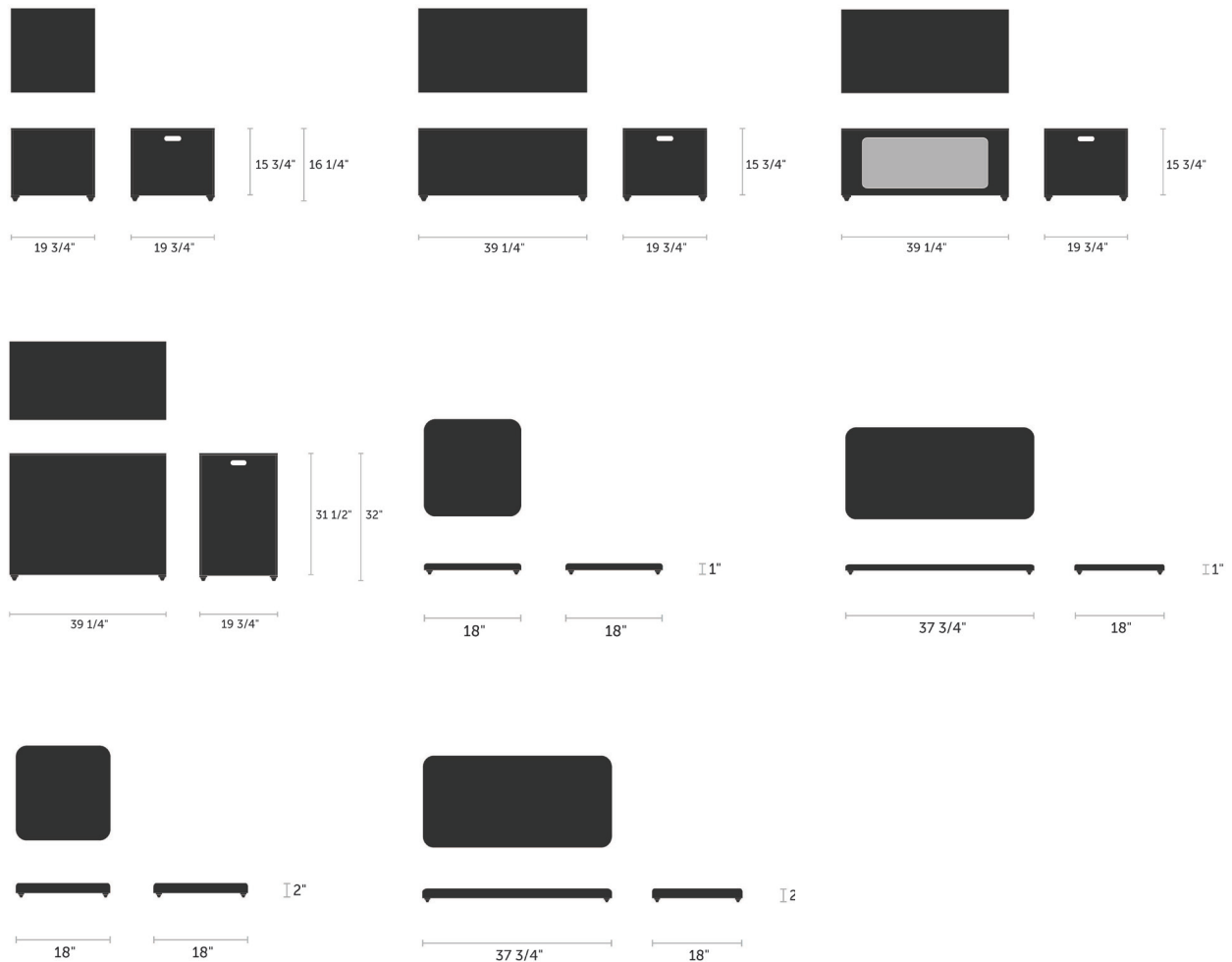
Finishes

Lacquered Plywood

Group 2: Camira Vita, Camira Main Line Plus, Camira Main Line Flax

Group 3: Camira Synergy, Camira Blazer, Camira Marvel

Dimensions





**CALIFORNIA COOL
LONDON DESIGN**