

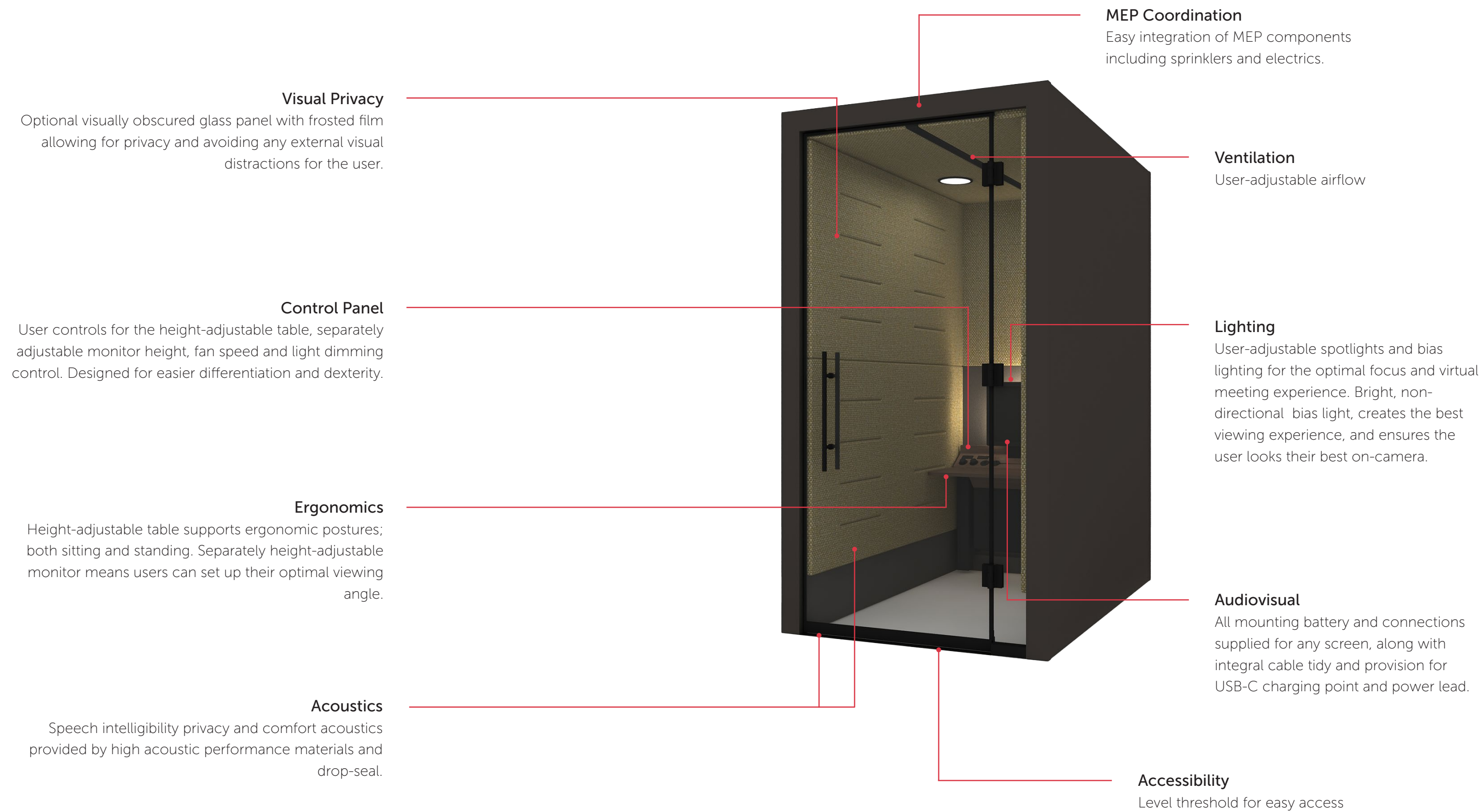


Portals Connect

A customizable and private video conferencing space with every need of the user catered to, enhancing and optimizing the video call experience.

Spacestor.

Key Features



Portals Connect

A customizable and private video conferencing space with every need of the user catered to, enhancing and optimizing the video call experience.

Variations



Accessible
PTC-DDA

Dimensions



Accessible
Depth: 71"
Height: 88" / 94"
Width: 47¼"
Table Height Range: 24" - 46"

Cladding Finishes

Lacquered Plywood		LPL 1:	White
HPL 1:	Frosty White, Black, Natural Maple	LPL 4:	Black, Fog Grey, Hardrock Maple
HPL 2:	Brite White, Designer White, Dove Gray, Citadel, Pewter, Graphite, Navy Blue, Blueberry Taffy, Matrix Blue, Winter Sky, Cassis, Spectrum Red, Clementine, Chrome Yellow, Fossil, Spectrum Green, Finnish Oak, Danish Maple, Oiled Walnut, Earthenware, Oyster Gray, Pumice, Carbon Mesh	LPL 5:	Arctic Groovz, Cotton White, Pelee Island Pear, Rogue Valley Pear, Willow, Charcoal, Storm, Talas Cherry
HPL 3:	Otter, New Burgundy, Just Rose, Fawn Cypress, Millennium Oak, Neowalnut, Walnut Heights, Blackened Legno, Field Elm, White Ash, Blush, Green Slate	LPL 6:	Ashen, Celadon, Duke, Linear Ash, Mist, Mysterious, Noce Vettore, Roja, Sienna, Verde, Adobe, Enigma, Karuna Ash, Quarry
HPL 4:	Bleu Rada, Azzuro Pervinca, Verde Lauro, Rosso Lord, Dark Verde Oliva	LPL 7:	Alabaster, Ginger

Upholstery finishes

Group 3:	Camira Main Line Flax, Camira Synergy
Group 4:	Camira Blazer, Kvadrat Remix 3, Kvadrat Melange Nap, Kvadrat Clara 2, Kvadrat Hero
Group 5:	Kvadrat Steelcut Trio 3, Kvadrat Canvas 2, Kvadrat Hallingdall 65

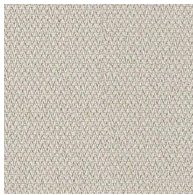
Recommended SkinPerfect Upholstery Palette



Wall Panels
Camira Era
Generation CSE02
LRV 24.51%



Ceiling
Camira Era
Futurist CSE01
LRV 49.88%



Behind the Screen
Camira Era
Futurist CSE01
LRV 49.88%

Technical Specification

- User-adjustable spotlights & bias lighting
- User-adjustable airflow & ventilation
- Separately height-adjustable desk and monitor
- ADA width door opening
- Step-free access allows for greater accessibility & inclusivity
- Privacy film available with an optional upcharge
- 2 year warranty on electrical parts, 5 year warranty on all structural elements (subject to normal conditions of use and care)
- Plug-and-play, one standard soft-wired power outlet needed
- Upholstery complies with CA TB 117-2013 and SB 1019
- Seismic anchoring options available
- Acoustic DSA rating (speech intelligibility) to a minimum of 22.7 dB





CALIFORNIA COOL



LONDON DESIGN

+1 (310) 410-0220
us.sales@spacestor.com
www.spacestor.com