

TECHNICAL DATA

Portals Huddle

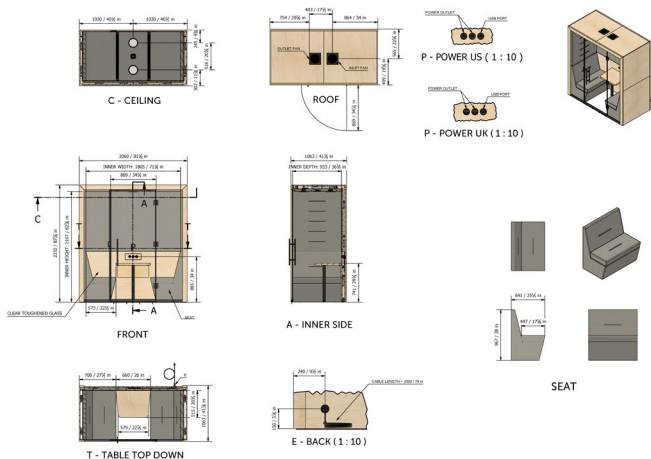
Spacestor®

Product Overview

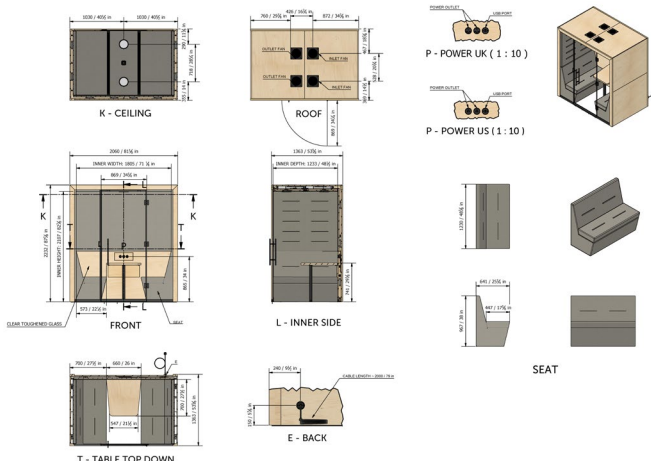
Portals Huddle allows the workplace designer to curate softer, private collaboration spaces, entirely suited to the look and feel of their space. With sizes of just two or four workstations, Portals Huddle is not only a space-efficient collaboration hotspot, but is entirely future-proof, allowing for endless workplace reconfiguration and even relocation. Plug-and-play, with PIR-activated spotlights and ventilation, Portals Huddle is an acoustically secluded collaboration space, available in a huge range of exterior and interior finishes, and its step-free access allows for greater accessibility.

Dimensions

2 person (inches) 81"w x 42½"d x 88"h



4 Person (inches) 81"w x 53½"d x 88"h



Environmental Summary

During the development journey we always kept our environmental impact in mind. This is demonstrated in the following key features of the design when the pod is purchased with the recommended finishes:

- All materials used are LBC 3.1 Red List Compliant, an extremely stringent standard
- Patented PVC-free acoustic door seal
- Product lifecycle – the products are designed to be modular and reconfigurable to cater for future needs without wastage and using more resources.

- Power usage – the products are designed with minimum idle power usage, with a PIR movement sensor to switch off the lighting after a period of non-use.
- FSC® Certified (FSC-C081796) Lumber.

Environmental Document & Declare Label



Sustainability Compliance

Spacestor products support leading sustainability standards including WELL, LEED, BREEAM, LBC (Living Building Challenge), and SKA. By aligning with these frameworks, we help you create environmentally responsible spaces that enhance employee wellbeing.

We simplify the complexity of certification by providing clear, tailored guidance and product-specific compliance breakdowns for your project.

Scan above for more information or contact your dedicated rep for detailed documentation.

Electrics

Lighting & Power

Low Voltage LED Lighting for consistent illumination is supplied on a PIR system with movement sensor.

- 2 x Spotlights included as standard PIR activated
- PIR has a detection angle of 120 deg and a detection range up to 8m
- Power module included as standard
- Plug-and-play, one standard 13A socket needed
- 2 year warranty on electrical parts

Colour temperature	4,000 K
Light colour	Cool white
Nominal voltage	24.00 V
Wattage	6.50 W
Luminous flux	550 lm
Luminous efficacy	84 lm/W
Colour rendering index Ra	>90
Colour rendering index R9	50

Electrical Loading

	Standby consumption	Average use (screen, lights and fan)	Max use (all sockets at max)
Voltage	240	240	240
Total power (W)	3.5	308.9	1541.4
Total current (A)	0.02	1.61	8.03

Fan System

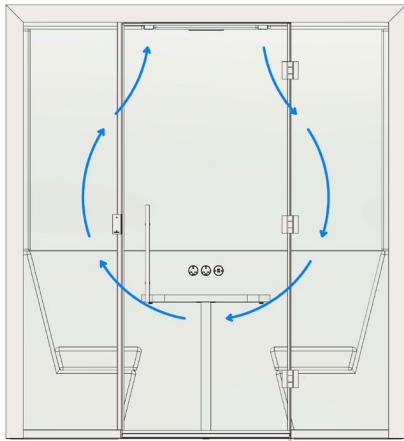
- 2 Person - 3 identical fans on the pod - 2 fans bringing air in to the pod and 1 fan taking air out
- 4 Person - 3 identical fans on the pod - 1 fan bringing air in to the pod and 2 fans taking air out

Portals Huddle

Spacestor®

- Fans have a flow rate of 66 litres per second*
- The measured actual flow rate per fan is ~11 litres per second, due to back pressure on the fans etc.

*The actual air flow rate through the furniture and the vent is always less than the flow rate stated



Safety

Fire Ratings

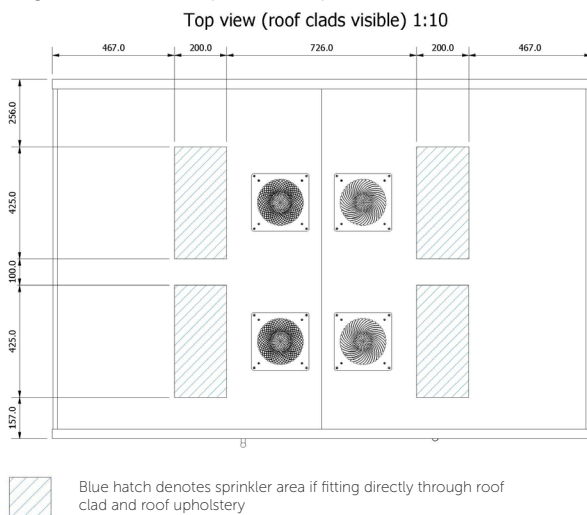
- Upholstery fabric selected from approved contract quality fabric ranges, minimum Matindale test of 45,000 rubs and tested to Crib 5 or C&M
- Fabric & foam supplied complies with BS 7176: Firest test to non-domestic seating – Standard Brief.
- BS 7176 specified requirements for the resistance to ignition of upholstered furniture used for seating when tested in accordance with BS 5852, BS EN 1021-1 or BS EN 1021-2, as appropriate. The levels of ignition resistance have been set after careful consideration of the fire risk of the particular end-use environment involved.

Lifting

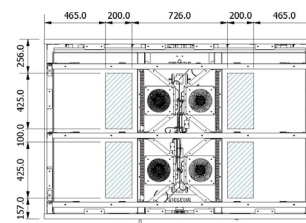
Product must be handled by 2 operatives.

Sprinklers

To address the need for any required fire sprinkler regulations, this product can accept a sprinkler head drop from the building fire sprinkler system via a cut out, managed per project with the Project Manager. A flexible fire sprinkler drop is recommended.



Top view (roof clads hidden) 1:20



General safety

- All maintenance and repair tasks must be performed by appropriately qualified and authorised technicians.
- Only use tools that are appropriate for these tasks.
- For longer periods of absence or if there is a thunderstorm, unplug the power supply cable from the power outlet to avoid damage due to grid-related over-voltage.

Structural

Adjustable levellers on the product have up to 13/16" / 20mm tolerance

Seismic

To address the need for any required seismic regulations, this product can be fitted with brackets, managed per project with the Project Manager.

Weights

88"h 2 Person: 970 lbs

88"h 4 Person: 816 lbs

Acoustics

Rating

The acoustic performance was optimised during the design process to achieve speech intelligibility privacy by using high acoustic performance materials.

'Acoustic performance' of a pod is the noise reduction level (sound from inside to outside/outside to inside). Noise reduction level is affected by external factors - e.g. the environment, external noise level, how close the pod is to a wall etc.

The materials used in the products have noise absorbing properties ranging from 30 to 60+ db rating but this is not representative of the product as a whole.

We have designed our products in such a way to block sound transfer but there are other factors such as the building sub-floor etc. that affect the noise reduction level.

Shipping

Shipping dims/weight/packaging are dependant per project - please enquire.

Type/ Qty	1	2	3	5	10	15	20
2 person	1 x Double 1 x Single	1 x Double 1 x Single	1 x Double 2 x Single	1 x Double 3 x Single	1 x Double 5 x Single	1 x Double 8 x Single	1 x Double 10 x Single
4 person	1 x Double 1 x Single	1 x Double 2 x Single	1 x Double 3 x Single	2 x Double 5 x Single	4 x Double 10 x Single	5 x Double 15 x Single	7 x Double 20 x Single